

Description:

EFV-018C 30W Small Size long-life series, No 100/120Hz flicker; LED Driver with Rubycon long life capacitors, high efficiency, high power factor, 100% no flicker, No Visible Flicker - No Invisible - No Imperceptible Flicker* to protect your eyes.



1. 100% No Flicker - No Invisible or Imperceptible Flicker
2. High efficiency 90%.
3. Rubycon long life capacitors -10 times life of the ordinary capacitor
4. Protections: Short circuit / Overload / Over voltage / Over temperature
5. IP67 design for indoor or outdoor installations
6. 3750V HI-POT TEST
7. Compliance to worldwide safety regulations for lighting
8. 3 years warranty

SPECIFICATION

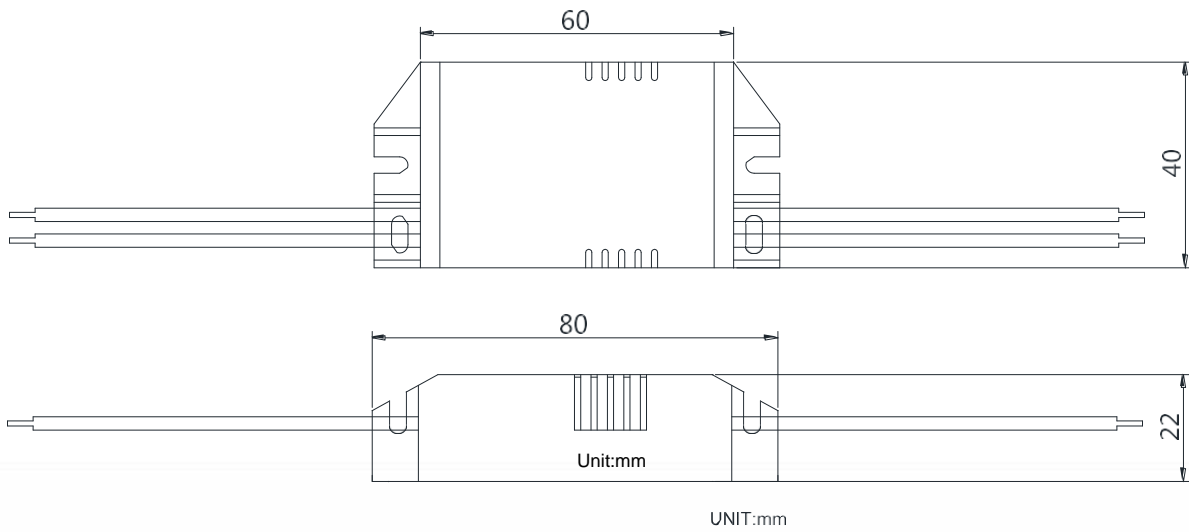
MODEL		EFV-018C-W12	EFV-018C-W24	EFV-018C-W36	EFV-018-W42	EFV-018-W60
OUTPUT	Rated current	2A	1.25A	0.9A	0.7A	0.5A
	Constant Current Region	9~12V	15~24V	26~36V	32~42V	45~60V
	Current Accuracy	5%	5%	5%	5%	5%
	Rated Power	24W	30W	32.4W	29.4W	30W
	Setup time	<500 ms				
	Ripple & Noise	0.5% Operating Voltage				
INPUT	Voltage range	85~135VAC, 165~265VAC,				
	Power factor	PF> 0.6 at full load and rated output voltage				
	Max AC Current	1A/100VAC	0.5A/230VAC			
	Frequency range	47~65Hz				
	Efficiency (Typ.)	84%	86%	87%	88%	90%
PROTECTION	Short Circuit	short circuit protection , Auto Recovery				
	Over Temperature	Maximum temperature of components inside the case				
	Over Voltage	14.5~18V	26~32V	40~46V	46~52V	65~75V
ENVIRONMENT	Working TEMP	-25℃~50℃				
	Storage TEMP.	-40℃~80℃10 ~ 95% RH				
	Working Humidity	20 ~ 95% RH non-condensing				
	Vibration	10~500Hz 2G 10min/1cycle period for 60min. each along X, Y, Z axes				
	TEMP. coefficient	±0.03%/℃ (0~50℃)				
SAFETY & EMC	Safety Standards	CE EN 61347-1, EN61347-2-13 Design refer to UL1310 Class 2, IP67 approved				
	WITHSTAND VOLTAGE	I/P-O/P:3.75KVAC				
	ISOLATION RESISTANCE	I/P-O/P:>100M Ohms / 500VDC / 25 / 70% RH				
	EMC EMISSION	Compliance to EN55022 (CISPR22) Class B, EN61000-3-2 Class A, EN61000-3-3				
	EMC IMMUNITY	Compliance to EN61000-4-2,3,4,5,6,8,11, EN55024, light industry level, criteria A				
OTHER	MTBF	600KHours MIL-HDBK-217F (25℃)				
	Dimension	60x40x22mm				
	Weight	120g				

All parameters NOT specially mentioned are measured at 230VAC input, rated load and 25 of ambient temperature.

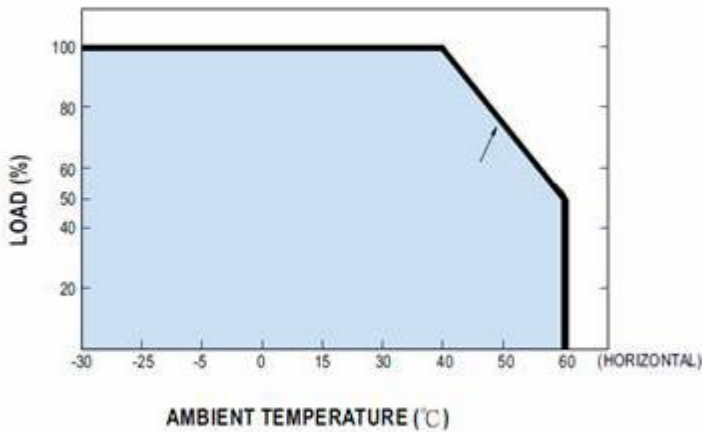
Direct connecting to LEDs is not using additional drivers is highly recommended

Before ordering, please confirm the sample.

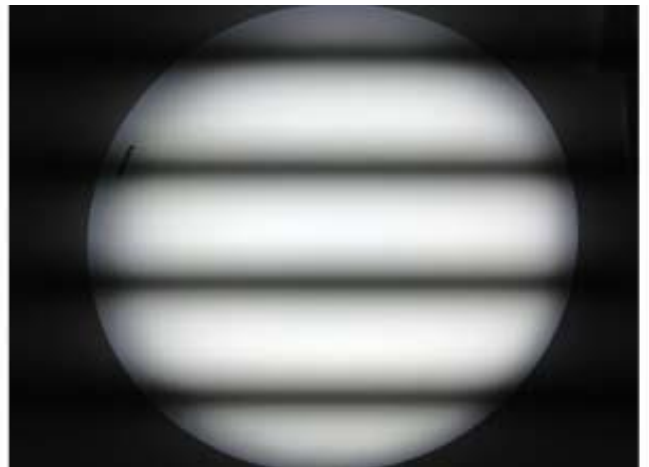
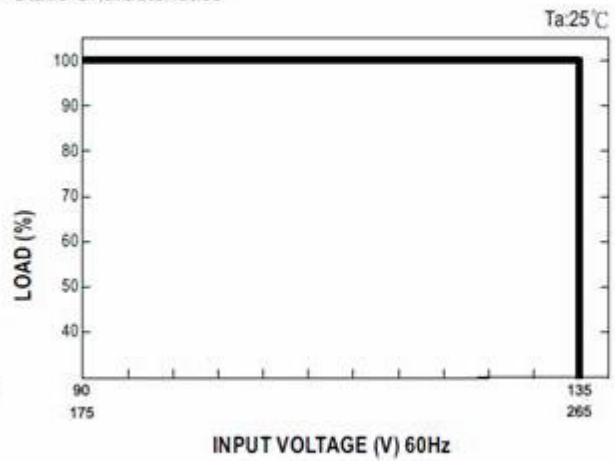
Mechanical Specification



Derating Curve



Static Characteristics



How to identify Invisible or Imperceptible Flicker:

The easiest way is: take out your camera or mobile phone with a camera function, close-up shots lamp light source, less than 30cm (high brightness point light source is required to use the lampshade diffusion cover), flicker the lamps will show blinds or appear regularly stripes; the no flicker lamps like a blank sheet of paper, not streaks.

The Invisible or Imperceptible flicker, can also affect human health, such as: The effects can range from headache to the decreased visual performance to non-specific malaise to the onset of some forms of epilepsy. [IEEE P1789](http://www.ieee.org/publications_standards/publications_standards_content.do?doi=10.1109/17.1471038)