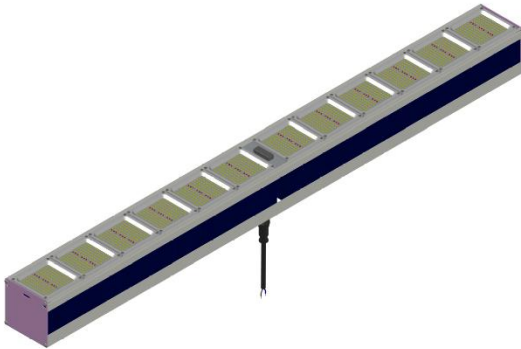


Description: RX-G600 Toplighting LED Grow Module, Concentrating Light efficiently and More uniform spectral radiation, directional light ,high light utilization efficiency, more efficient comparison with common grow lights. Silicone Potted waterproof, more Suitable for various kinds of plant cultivation (dedicated light recipes), high wire vegetables, vegetable cultivation, flower cultivation, ornamental plant cultivation, succulent plant cultivation, medicinal plant cultivation.



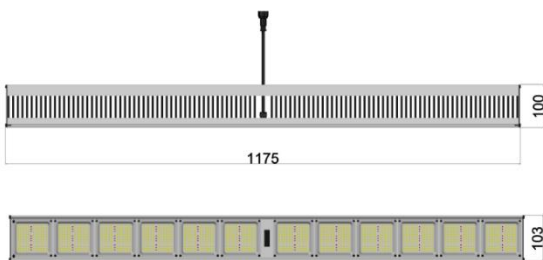
1. 600W top light greenhouse fill light planting lamp.
2. High PPF, PAR up to 1700umol / s, PPF up to 1200umol/m² / s @ 0.5m
3. Samsung or German brand plant and plant special garden LED, PPF efficiency 2.8umol / J
4. Optimize the plant spectrum to meet different plant illuminations or customize the spectrum you need.
5. Conformal Coated, waterproof IP64, can customize IP65 (lens + reflector)
6. Input voltage: 100~305VAC (different depending on power supply), PF> 0.9.
7. Lifespan: 50,000 hours.
8. Meet the safety requirements around the world, CE RoHS FCC

| Model | Dimension LxWxH | Spectral Wavelength | Photon PPF $\mu\text{mol}/\text{m}^2/\text{s}$ | Luminous flux Radiation Power | Power Input | Comment |
|------------------------|-----------------------------|---------------------|---|----------------------------------|--------------------|--|
| RX-G600-F20 3K511R2 | 1175x103x100mm 47"x4"x4" | | 1228 μmol @0.5m 78051Lx 420 μmol @1m 26768Lx 127 μmol @2m 8163Lx | Flux: 111547Lm PPF:1748umol/s | 600W AC230/277V | 2.8umol/J Plant growth Light recipe |

Surface temperature rise Tc 33K , Operating temperature: -30°C ~ 40°C , Lifespan: 50,000 hours (Note: Ta 25°C)
Tolerance range for optical and electrical data: $\pm 10\%$. Light emitting angle: 90 °
Recommended irradiation distance 0.5 ~ 3m

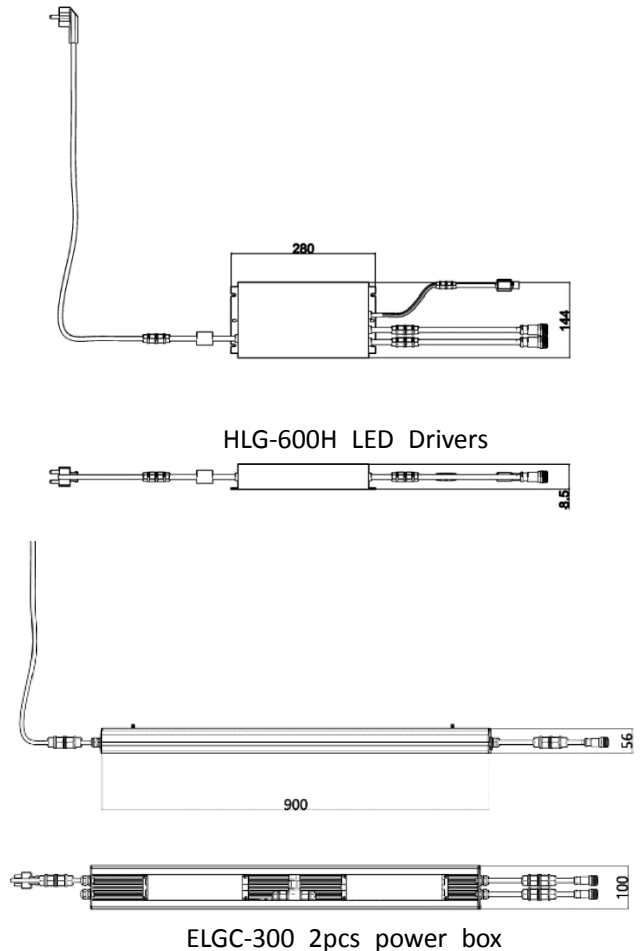
The above data is for reference only!

● Dimension:



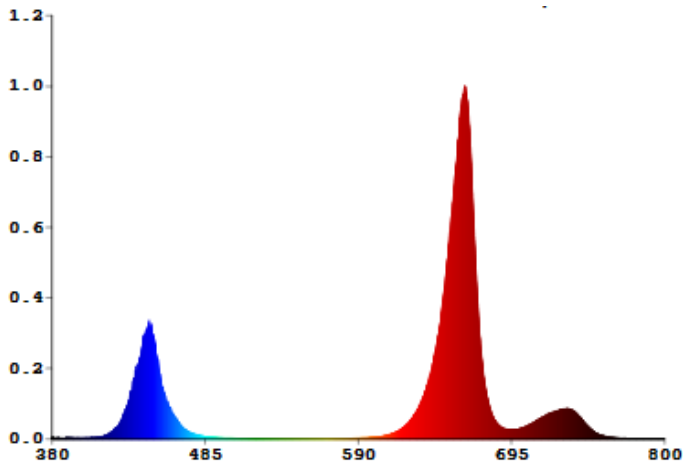
RX-G600 LED Grow Light Module

UNIT: mm

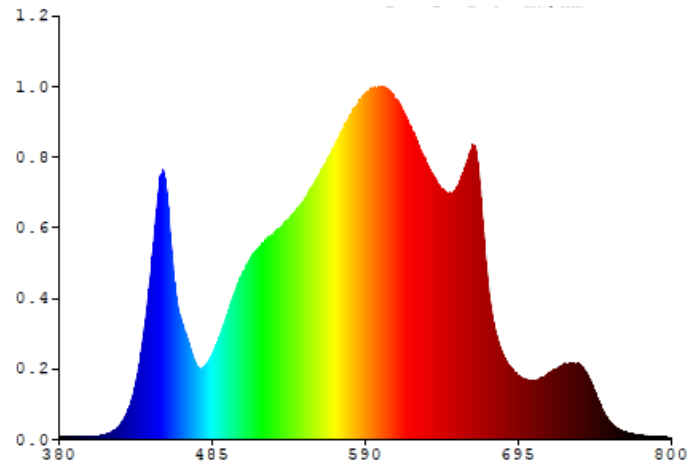


ELGC-300 2pcs power box

● Optional spectrum

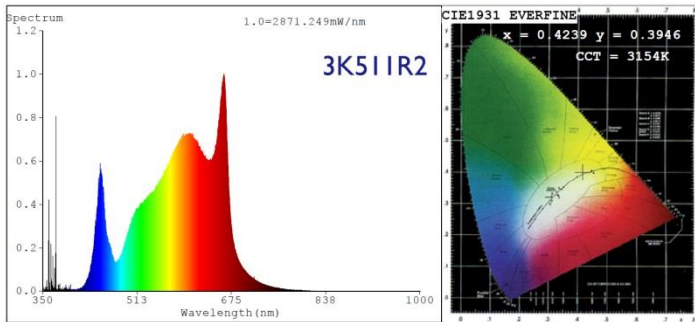


RX-G600-OR1 spectrum

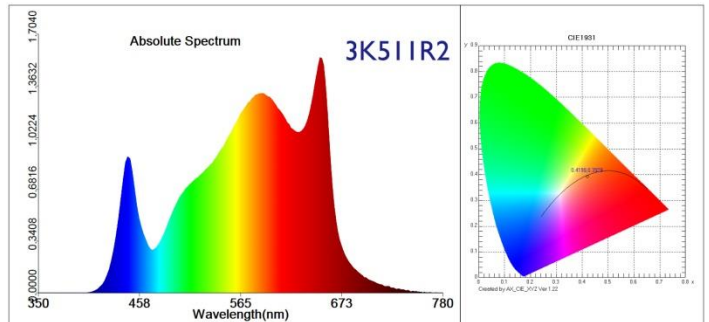


RX-G600-F19 spectrum

PPF PAR testing report



PPFD testing report



Color Parameters:

Chromaticity Coordinate: $x=0.4239$ $y=0.3946$ $u^*=0.2462$ $v^*=0.5156$
 CCT=3154K (Duv=-0.0019) Dominant WL:Ld =582.9nm Purity=45.7%
 Ratio:R=22.5% G=74.8% B=2.8% Peak WL:Lp=662.2nm FWHM=120.4nm
 Render Index:Ra=89.1 AvgR=85.7
 R1 =88 R2 =93 R3 =96 R4 =88 R5 =88 R6 =90 R7 =91
 R8 =78 R9 =51 R10=84 R11=89 R12=77 R13=89 R14=98 R15=85

Photo Parameters: 1748μmol/s 602W

Flux = 111547 lm Eff. : 185.29 lm/W Fe = 370.2 W
 Scotopic:1.6076e+005 S/P:1.4412
 Photosynthetic:PPF:1748.4μmol/s PAR WATT:3.6074e+005mW(400-700nm)

Electrical parameters:

V = 230.40 V I = 2.650 A P = 602.0 W PF = 0.9800
 LEVEL:OUT WHITE:ANSI_3000K

RX-G600-F20 2.65A PPF Output test

Test parameter:

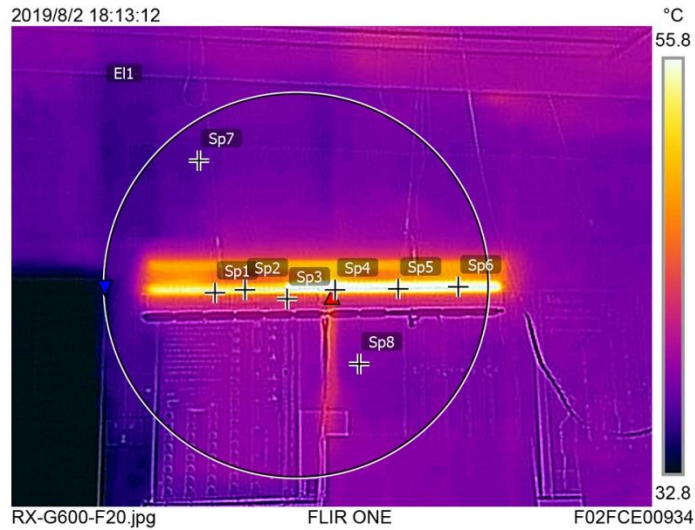
E= 78051.1 lx E(fc)=7253.82 fc
 CIE x= 0.4198 CIE y= 0.3928 CIE u*=0.2443 CIE v*=0.5143
 Tc=3217 K Lp=664.0 nm HW=146.3 nm Ld=582.7 nm
 Pur=43.9 % Ratio_R=21.9 % Ratio_G=75.2 % Ratio_B=2.9 %
 Duv=-0.00196
 Ra=87.9 R1= 86 R2= 92 R3= 97
 R4= 87 R5= 87 R6= 89 R7= 90
 R8= 76 R9= 45 R10= 83 R11= 86
 R12= 76 R13= 88 R14= 98 R15= 83
 SDCM= 5.5(3500K/White) White Class:OUT
 E1=253.54 W/m2 E2=258.14 W/m2 PPF=1228.1 μmol/(m·s)
 Ech-A=50.726 W/m2 Ech-B=43.325 W/m2 Ef=4.4388 W/m2
 Eb=38.523 W/m2 Ey=104.32 W/m2 Er=110.91 W/m2
 Ep=225.53 W/phyto/m2 Erb_Ratio=2.879

1228μmol/m²/s

RX-G600-F20 H50 PPFD Output test

● Surface temperature test report

| Measurements | | |
|--------------|---------|---------|
| EI1 | Max | 61.0 °C |
| | Min | 33.0 °C |
| | Average | 35.0 °C |
| Sp1 | | 48.6 °C |
| Sp2 | | 54.6 °C |
| Sp3 | | 36.2 °C |
| Sp4 | | 60.2 °C |
| Sp5 | | 58.4 °C |
| Sp6 | | 58.6 °C |
| Sp7 | | 33.3 °C |
| Sp8 | | 33.5 °C |
| Parameters | | |
| Emissivity | | 0.9 |
| Refl. temp. | | 22 °C |
| Geolocation | | |
| Compass | | 0° N |



● Electronic installation instructions

1. When open the package, please check whether the inside is including product, accessory, label, certificate quality. And please assure that the light is perfect without any damage.
2. The wires of LED Light is three-core, the standard size of the wire is 3*1mm² or 3*1.5mm² and the outer diameter is Φ7~12mm, brown wire is live line, blue wire is null line, yellow & green is ground line.
3. LED Light will work when the voltage up to rated voltage, so please be sure the voltage within the requested range, or it will damage the light which can't be repaired.
4. when the electrical continuity is connected, the lead wire should be in electric insulating The way of connect wire:

Attention

1. In order to make sure the light can work safety and stability, the ground line should be connected the earth.
2. When connecting the wires please turn off the power, and check whether the wires are connected correctly. Never connect the wires in opposite way, or the power should not be turned on.
3. Please keeping the trip bolt being fastening and reliable, in case of the light fall down of looseness.
4. When finishing connect the wires, please use the insulation gummed tape to convolve the wires, confirm the insulation and solve the waterproof problem.