

Description: Xinelam LED tube lights, using a unique design, No Visible Flicker - No Invisible - No Imperceptible Flicker* to protect your eyes. Completely in accord with the connotation of green lighting, contains highly efficient energy-saving, environmental protection, safety, comfort, long-life. Specifically optimized design for solve the problem of Invisible or Imperceptible Flicker!



Features:

1. Unique optimized design, No flicker - Caring for your eyes
2. Security, 100% high-pressure test, the top international power design that ensure the requirments of the safety for all countries
3. High efficiency, luminous efficiency of more than 90Lm / W
4. The international top capacitors guarantee the long life, Compare to the ordinary electrolytic capacitor, the life is 10 times longer.
5. Real longlife: ≥ 36000 hours
6. Warranty: 3 years

Scope of application:

Apply to Supermarket, School, Office, Warehouse, Hospital, Hotel, Display case, Museum, Bus, Train, Factory



Electronical Specifications:

Input: AC90~265V 50/60Hz (more see table below)

Power: 7W, 9W, 14W, 18W, 24W, 28W

Viewing angle: 120° **luminous efficiency:** ≥ 100 Lm / W

CRI: Ra >75 (Selectable Ra >85)

Available colors: Warm White 2700~3200K,

Neutral White 4200~4700K, Cool white 6000~6500K

Mechanical Specifications:

Main Material: Aluminum radiator, PC lampshade, high luminous efficiency LED, long life isolated power supply.

Dimensions and weight: see table below

Temperature: -20℃~50℃ Storage Temperature -20℃~60℃



How to identify Invisible or Imperceptible Flicker:

The easiest way is: take out your camera or mobile phone with a camera function, close-up shots lamp light source, less than 30cm (high brightness point light source is required to use the lampshade diffusion cover), flicker the lamps will show blinds or appear regularly stripes; the no flicker lamps like a blank sheet of paper, not streaks.

The Invisible or Imperceptible flicker, can also affect human health, such as: The effects can range from headache to the decreased visual performance to non-specific malaise to the onset of some forms of epilepsy. [IEEE P1789](http://www.ieee.org/publications_standards/publications/details/abstract/abstract.jsp?abstract=1789)

RX-Txx series commonly used size data sheet:

MODEL Lamp Base Power	Diameter Weight	Luminous flux <u>Lm</u>	Temp eratur e rise	Rated life Hours	TRIAC dimming	Input Power Factor	Illuminance Equivalent fluorescent lights	Comment
RX-T5-CV T5 tube L:600mm 7W	W:22mm H:35mm 150g	630Lm	<20 °C	50000	No	AC 90~265V PF >0.9	T5 14W	Extend connection without dark areas Max:12m No flicker
RX-T5-CV T5 tube L:1200mm 14W	W:22mm H:35mm 260g	1260Lm	<20 °C	50000	No	AC 90~265V PF >0.9	T5 28W	
RX-T8-A T8 tube L:600mm 9W	Φ26mm 200g	850Lm	<20 °C	50000	No	AC 90~265V PF >0.9	18W	No flicker
RX-T8-A T8 tube L:1200mm 18W	Φ26mm 400g	1800Lm	<20 °C	50000	No	AC 90~265V PF >0.9	36W	
RX-T8-B T8 tube L:600mm 9W	Φ26mm Φ28mm 220g	850Lm	<20 °C	50000	No	AC 90~265V PF >0.5	18W	Elliptical Tube No flicker
RX-T8-B T8 tube L:1200mm 18W	Φ26mm Φ28mm 420g	1800Lm	<20 °C	50000	No	AC 90~265V PF >0.9	36W	
RX-T8-BX T8 tube L:900mm 14W	Φ26mm Φ28mm 320g	1400Lm	<20 °C	50000	No	AC 90~265V PF >0.9	28W	Elliptical Tube Rotated End Cap No flicker
RX-T8-BX T8 tube L:1200 18W	Φ26mm Φ28mm 420g	1800Lm	<20 °C	50000	No	AC 90~265V PF >0.9	36W	
RX-T8-BX-D T8 tube L:1200mm 18W	Φ26mm Φ28mm 420g	1800Lm	<20 °C	50000	Yes	AC90~135 AC 175~265 PF >0.9	36W	Elliptical Tube Rotated End Cap Triac DIM No flicker
RX-T8-BX-D T8 tube L:1500mm 24W	Φ26mm Φ28mm 500g	2400Lm	<21 °C	50000	Yes	AC90~135 AC 175~265 PF >0.9	48W	
RX-T10-A L:1200mm 24W	Φ30mm 460g	2400Lm	<20 °C	50000	Yes	AC90~135 AC 175~265 PF >0.9	48W	Triac DIM No flicker

The above table data testing at room temperature is 25 °C, test voltage AC230V 50Hz; LED color temperature 6000-6500K, CRI: > 75
 ※Rated life: 70%Lumen maintenance at Ta25° C

Tolerance range for optical and electrical data: ±10 %.

Note: Warm White 2700~3200K, Neutral White 4200~4700K, brightness is reduced by 5%. If the selected CRI 85, 10% decrease in brightness.



RX-T5-CV



RX-T8-A



RX-T8-B



RX-T8-BX



RX-T10-A

Three unique advantages:

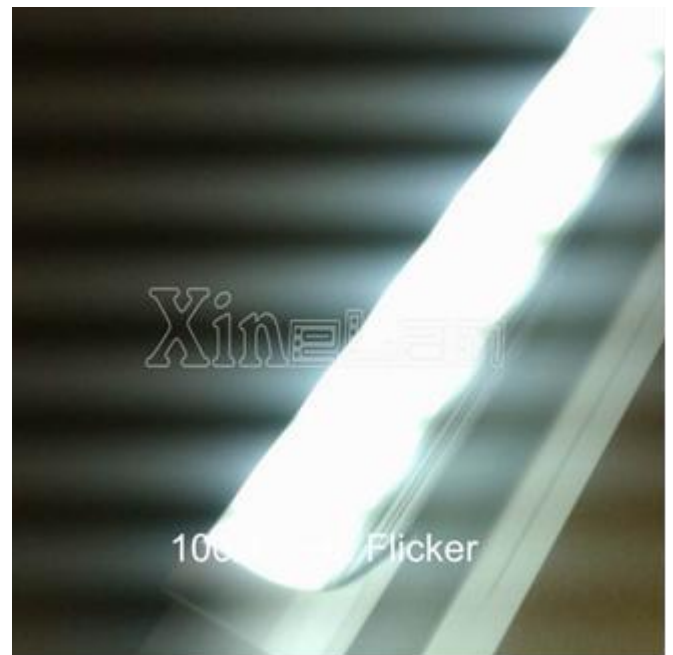
1. No flicker - Now marketed lighting , 90% with Invisible or Imperceptible Flicker hazards.
Specifically optimized design for solve the problem of Invisible or Imperceptible Flicker



100/120Hz Flicker

100% No flicker
Protect your eyes

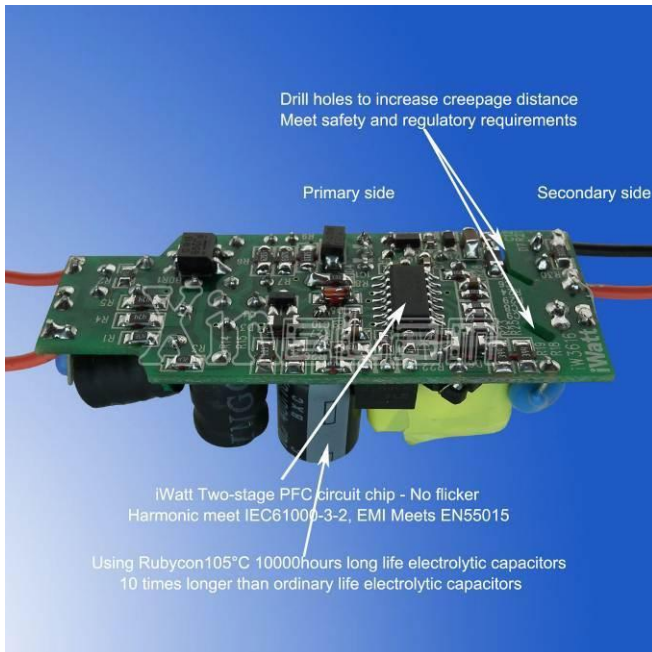
VS



100/120Hz Flicker

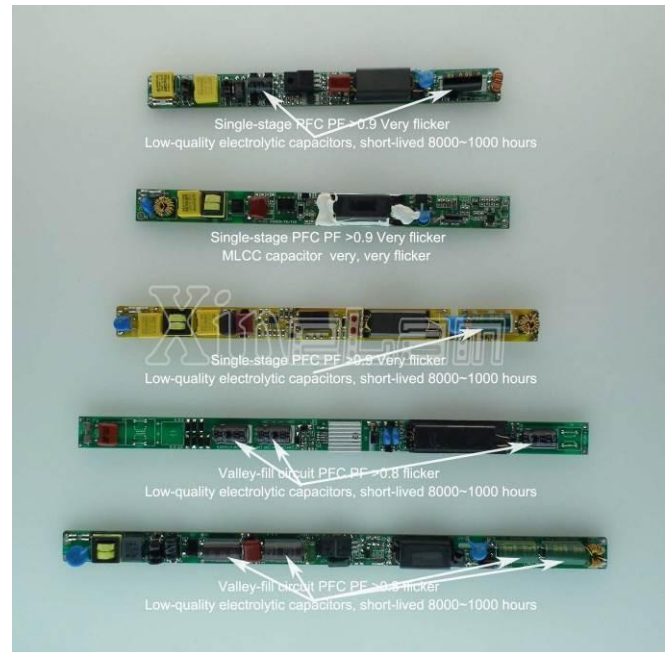
Invisible or Imperceptible flicker
May cause headaches, eyestrain, myopia !

2. Capacitance of the top international long life, the life expectancy is 10 times the ordinary electrolytic capacitor.



Using Rubycon105°C long life electrolytic capacitors of 8000~10000 hours, 10 times longer than ordinary life electrolytic capacitors.

VS



Ordinary electrolytic capacitor life is 800 ~ 1000 hours

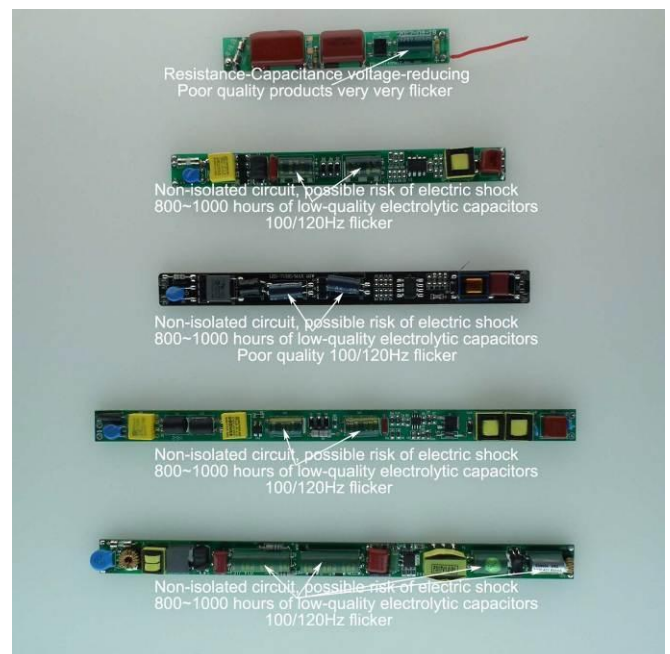
3. CE and UL standard design, Meet "Safety and Regulations" requirements



Meets IEC 61000; Meets IEC EN5515B

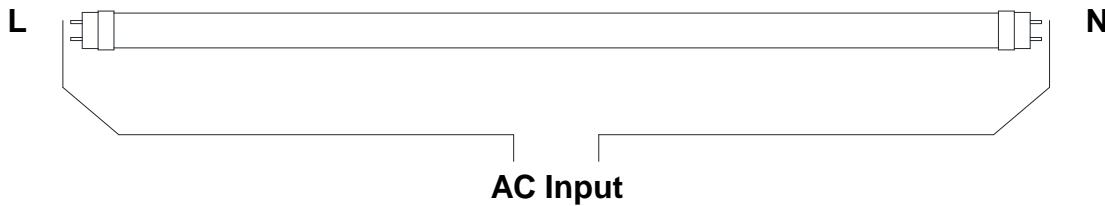
The additional rubycon Long-life capacitors, ensure that No flicker.

VS



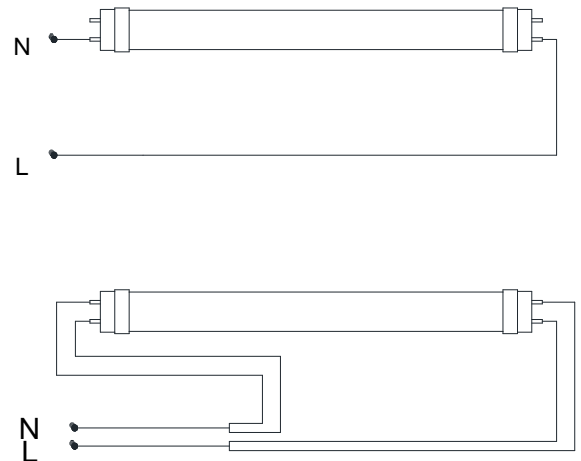
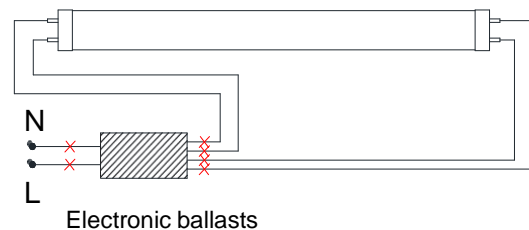
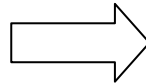
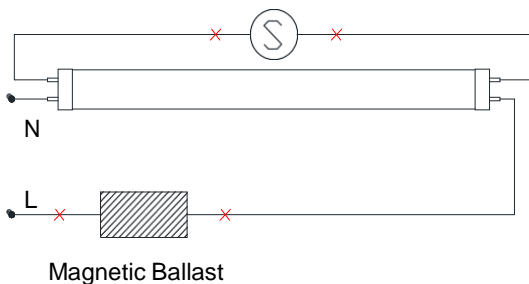
Non-isolated circuit, the risk of electric shock
Even includes poor RC voltage-reducing

Connection diagram



Installation:

1. Disconnect power to the fixture at source. **DO NOT SIMPLY SWITCH OFF FIXTURE.**
2. Ensure you are working with standard Fluorescent Light fixture. Note: your fixture may have more than 1 tube light and may/may not have a starter
3. Unpack the LED Tube Light:
Unpack and carefully examine product
Do not use the product if it is damaged
4. Open the fixture housing. Cut wire and remove the ballast. Remove the starter if exists
Re-connect the Hot (L) wire to one end and Neutral (N) wire to the other end



5. Check to ensure wiring is done correctly then close the fixture housing
6. Affix warning labels to fixtures near socket so they are visible to tube light installers
7. Re-connect power to the fixture and turn on switch. The LED Tube Light will light

Note:

1. Cut off the power before installation to ensure the switch in the closed state, to prevent electric shock.
2. To avoid the installation of the heat source and hot steam, corrosive gas, so as not to affect the life span.
3. This product is limited to indoor use, outdoor water-proof, please note
4. Is not compatible with traditional dimming, can not use dimmers(Indicate TRIAC dimming except)
5. Mounting location before installation to ensure that products can withstand the weight. Avoid high-altitude drop, hard object collisions, percussion.

Warning Description:

Open the product should immediately check the product after packaging is intact. Appear artificial or statement within the specified requirements caused by the failure, retreat retailers or directly return to factory replacement. Such as long-term disabled should be stored in cool, dry, clean environment, prohibit the humid, hot, or flammable places of storage and use. Not disassemble, replace the device. This product is not waterproof. Product improvements or other reasons due to parameter change without notice.