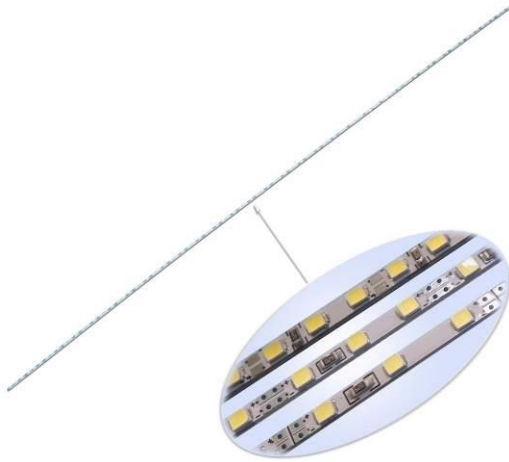


Description:

RX-BKT28-4M series Mini LED strip, Width is only 4mm; length can be cut needed. High CRI >80, high luminous efficiency, LED chip efficiency up to 158Lm/W. FR4 Rigid Strip, can 3LED cut, for edge-lit LED panel and light boxes.



1. 4mm or 5mm width LED Strip,
2. Length 1000mm, 72LED or 90LED or 120LED
3. Can 3LED Cut, Easy to install
4. Optional: DC12V or DC24V
5. High CRI >80 (Optional CRI >90)
6. Color temperature optional: 3000K, 4000K, 6000K, 10000K
7. High efficiency 122Lm/W, CV Input.
(0Ω resistance CC Input 158Lm/W)
8. CE RoHS FCC

Model	Dimension Net weight	LED QTY 0.2W SMD2835	Luminous Flux Efficiency Test	Rated Datasheet	Comment
RX-BKT28-4M72 -CW3	1000x4x2.6mm 18g	72/M	1358Lm 122Lm/W DC12V 11.14W	12W DC12V 1200Lm, CRI >80	Tcp 40 °C
RX-BKT28-4M90 -CW3	1000x4x2.6mm 19g	90/M	1610Lm 121Lm/W DC12V 13.29W	14W DC12V 1400Lm, CRI >80	Tcp 47 °C
RX-BKT28-5M120 -CW3	1000x5x2.6mm 21g	120/M	2024Lm 122Lm/W DC12V 16.6W	18W DC12V 1800Lm, CRI >80	Tcp 60 °C

The above table data testing at room temperature is 25 °C, Cooling by free air convection.

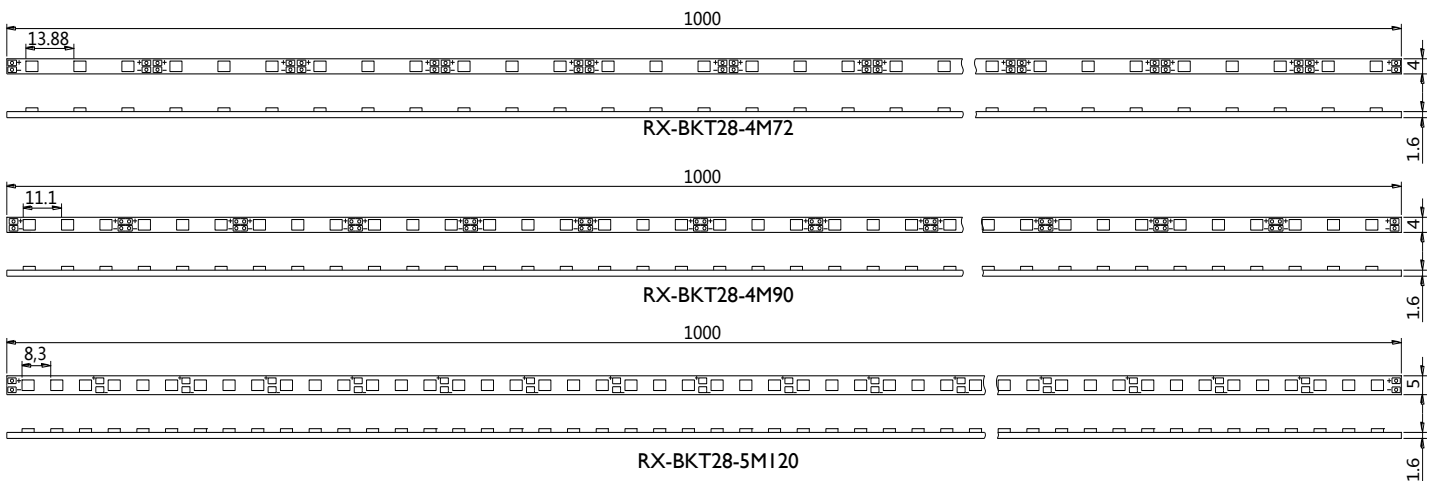
Operation Temperature: -30 °C ~ 70°C At the Tc point

Tolerance range for optical and electrical data: ±10 %.

Lifetime: 50,000 hrs (Note: Tcp < 60 °C)

Test LED color temperature 5800-6250K, (WW2800~3200K 92% brightness; NW3800~4200K 96% brightness)

*PCB Center - connection cable test; if Cut short; power will increase up to 0.2W / LED.

Dimension:


UNIT:mm