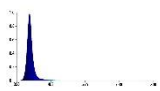



Description:

GE35 Horti Guru Grow Lights, special spectral plant fill light, UVA 365nm, 385nm, 395nm, blue 450nm, red 660nm, far red 730nm light strip, plant growth lamp, suitable for adding specific spectra on the basis of the original plant growth lamp.



1. Special spectral plant supplementary light strip
2. 365nm, 385nm, 395nm, UVA light strip, capable of mixing multiple wavelengths
3. 450nm, 5000K white light, can be mixed.
4. 660nm, 730nm can have a single wavelength and multiple LED blends
5. Waterproof grade IP64
6. Input voltage: AC100~277V PF>0.9
7. Meet global certification requirements
8. CE RoHS FCC

Model	Dimension LxWxH	Spectral Wavelength	Photon PPFD $\mu\text{mol}/\text{m}^2/\text{s}$	PPF	Power Input AC230V	Comment
GE35-90	900x38x40mm 35.4"*1.5"*1.6"	UVA 400nm	100 μmol @0.3m	53 $\mu\text{mol}/\text{s}$	40W	Customizable 365nm, 385nm, 450nm, 660nm, 5000K, 730nm And other proportions of mixed LED
GE35-120	1200x38x40mm 47.2"*1.5"*1.6"		100 μmol @0.3m	80 $\mu\text{mol}/\text{s}$	60W	
GE35-90	900x38x40mm 35.4"*1.5"*1.6"	FR IR 730nm	178 μmol @0.3m	12 $\mu\text{mol}/\text{s}$	40W	
GE35-120	1200x38x40mm 47.2"*1.5"*1.6"		178 μmol @0.3m	18 $\mu\text{mol}/\text{s}$	60W	

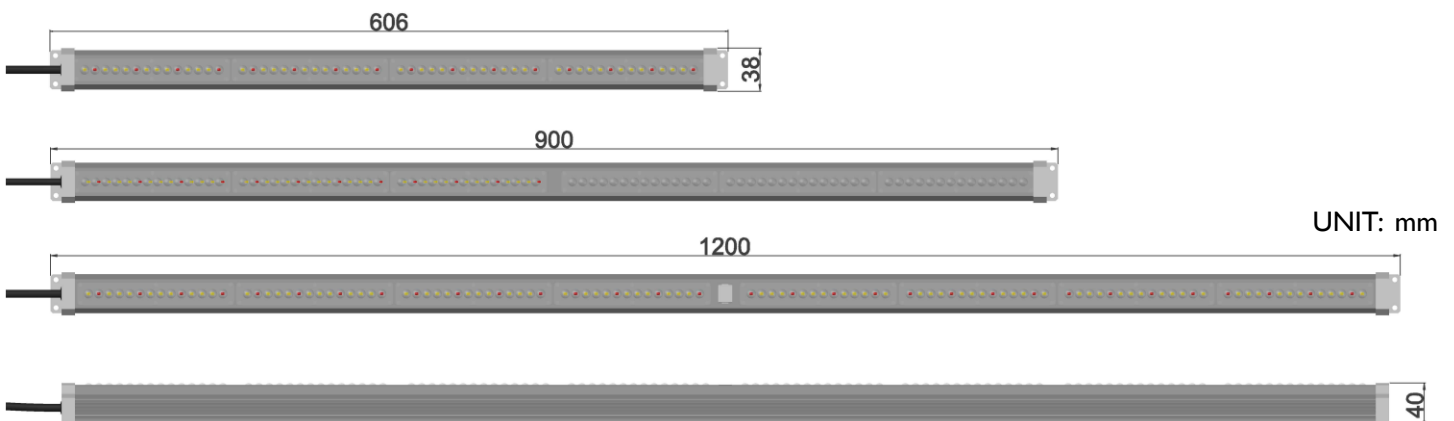
Operating temperature: -10°C ~35°C, Lifespan: 50,000 hours (Note: Ta 25°C)

Tolerance range for optical and electrical data: $\pm 10\%$.

The spectrum you need can be customized,

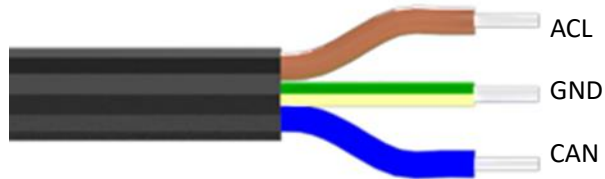
(Total PAR output: It is calculated by a single LED module) The above data is for reference only!

Dimension:



Electronic installation instructions

When open the package, please check whether the inside is including product, accessory, label, certificate quality. And please assure that the light is perfect without any damage.



Attention

1. In order to make sure the light can work safety and stability, the ground line should be connected the earth.
2. When connecting the wires please turn off the power, and check whether the wires are connected correctly. Never connect the wires in opposite way, or the power should not be turned on.
3. Please keeping the trip bolt being fastening and reliable, in case of the light fall down of looseness.
4. When finishing connect the wires, please use the insulation gummed tape to convolve the wires, confirm the insulation and solve the waterproof problem.