

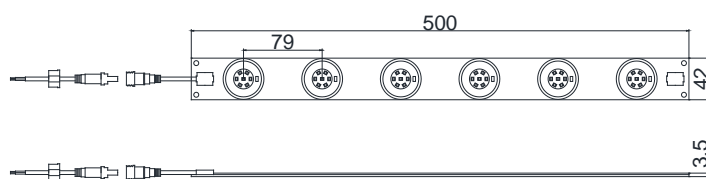
Description: RX-GW45-50042 Koray Plant nursery grow light module, For plant seedling growth, Full spectrum, high color rendering, special spectrum for plant seedlings, ultra-thin thickness 3mm, waterproof, suitable for vertical frame plant nursery. Dimmable design, adjustable to accommodate different PPFD or shelf heights. Suitable for indoor planting seedlings, experimental planting.



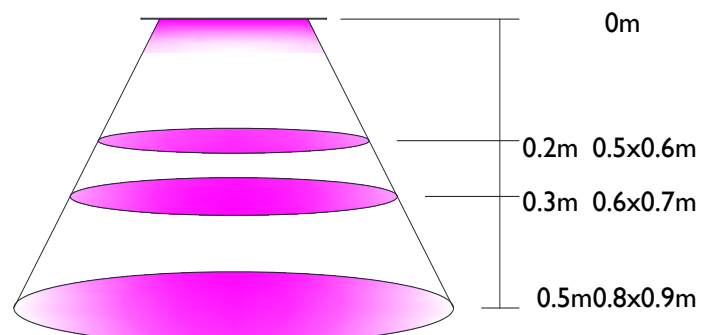
1. Vertical Planting tissue culture Cultivation Seedlings plant light module
2. Size: 500x42x3.5mm Ultra-thin, suitable for vertical agricultural seedlings
3. Dimmable design, adjust PAR output(Need extra dimmer)
4. Silicone potting waterproof IP65
5. Light emitting angle 120°
6. Optimize the spectrum for seedlings and customize the spectrum you need
7. Recommend using Meanwell power
8. Long life up to 50,000 hours
9. CE RoHS FCC

Model	Dimension	Peak Wavelength	Photon PPFD μmol/m²/s	Luminous flux Radiation Power	Power Input	Comment
RX-GW45-50042	500x42x3.5mm	6K6R1	78μmol @0.2m 4343Lx	Flux 921Lm Fe 3.8W	8.5W DC24V	Ra 90 Seedling growth also applies to aquariums
			43μmol @0.3m 2415Lx			
			19μmol @0.5m 1057Lx			
Surface temperature rise Tc 10K , Operating temperature: -30° C ~ 40° C , Lifespan: 50,000 hrs (Note:Ta ≤ 25° C) Tolerance range for optical and electrical data: ±10 % Light emitting angle: 120 °, Plant nursery, recommended irradiation distance 0.1 ~ 0.3m						

Dimension:

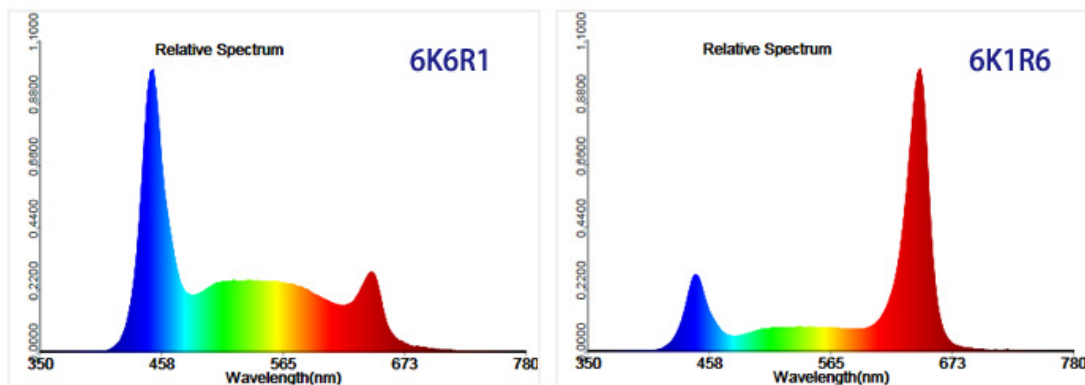
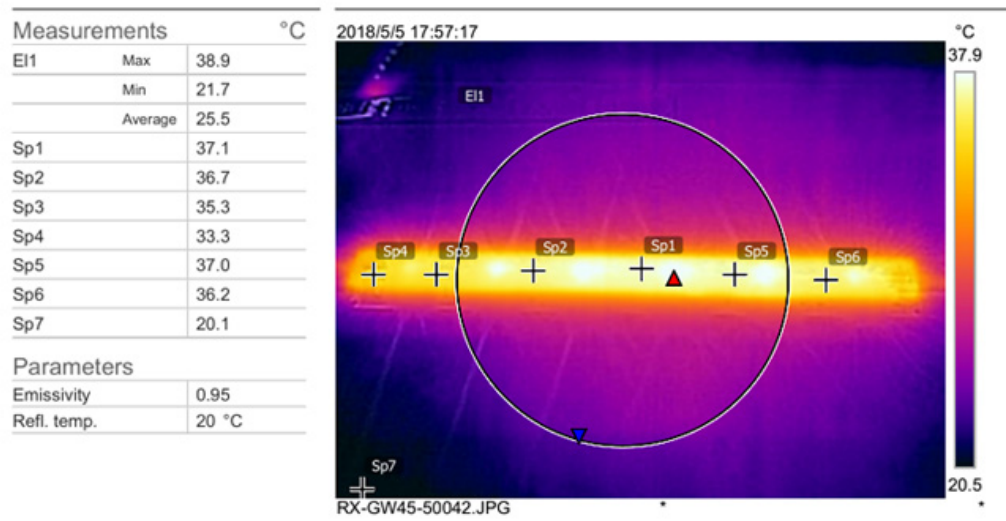


Depth distance & Coverage:



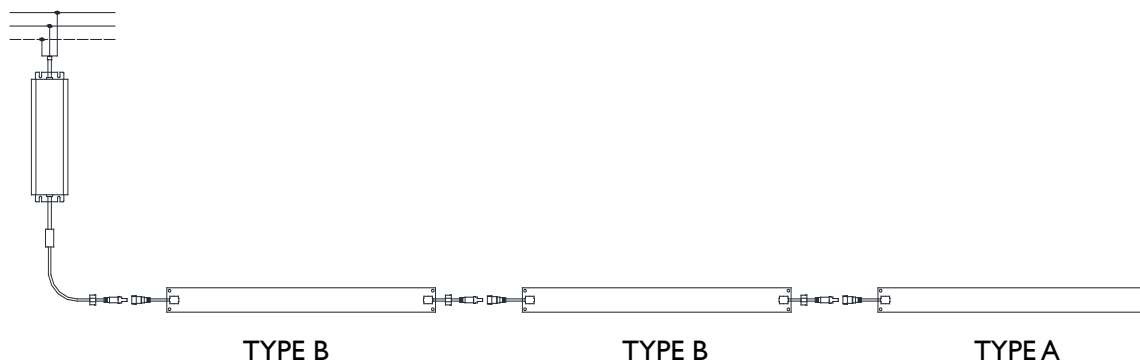
UNIT: mm

RX-GW45-295475 Test



Detailed PAR output, PPFD data, please contact us.

Wiring diagram



Maximum serial connection 6pcs